



Stay standing and moving around!
For the first 5 minutes, think about the following:

- What is the best way you learn?
- What was your best experience as a learner?
- What was your worst experience as a learner?



Mariners to Teachers

Teaching how to Teach



SOP

- Introductions!
- Who's here - poll of the room
- Let's talk about **respect**
- How do people learn?
- Action steps
- Q & A plus time to share

Holly & Maddy



Educational Programs
Manager at Oliver Hazard
Perry Rhode Island

- Marine science enthusiast
- Loves sport
- Hiccups a lot



Program Manager at
World Ocean School
aboard *Denis Sullivan*

- Slow runner
- Fast knitter
- Intermediate baker



Introduce Yourself!

- Name
- Where you were born
- Where you live currently
- If you're employed, your role
- If you're not employed, your dream role
- Your favorite shipboard word/phrase
- If you were a scented candle, what scent would you be?

Holly & Maddy



Candle scent: warm beach after a long swim that I'd title 'Best Fishes'



Candle scent: wool, coconut... maybe a hint of focsle mold...



Who's in the room today?

Beaufort Wind Scale in Miles per hour (Mph), knots and Kilometers per hour (Km/h)				
Beaufort Scale Force	Wind in MPH	Wind in Knots	Wind in Km/h	Description - Wave Heights—Visible Condition
Force 0	0-1	0-1	0-1	Calm; Ht 0.0m ~ At sea no waves - glassy like appearance of sea.
Force 1	1 - 4	1 - 3	2 – 6	Light Airs Ht 0m ~ At Sea wind makes glassy ripples on water.
Force 2	4 - 7	4 - 6	7 – 11	Light breeze Ht 0.1m ~ At Sea smooth wavelets
Force 3	8 - 12	7-10	13 - 19	Gentle breeze Ht 0.4m Slight ~ At sea slight waves no white horses.
Force 4	13 - 18	11-16	20 – 30	Moderate breeze Ht 1m - Slight to moderate ~ At Sea waves described as with occasional white horses. On land raises dust and loose paper; small branches are moved
Force 5	19 - 24	17 - 21	31- 39	Fresh breeze Ht 2m Moderate ~ At sea consistent white horses
Force 6	25 - 31	22 - 27	40 – 50	Strong breeze Ht 3m Rough At Sea large waves start to form, more extensive white foam crests, some blown spray.
Force 7	32 - 38	28 - 33	51 – 61	Moderate (near) gale Ht 4m Rough to very rough. At Sea waves begin to heap up and streaks begin to appear down the waves. On land whole trees in motion; inconvenience in walking against wind
Force 8	39 - 46	34 - 40	62 – 74	Fresh gale Ht 5.5m Very rough to high At Sea waves get longer - crests break into spindrift and the streaks become more pronounced.
Force 9	47 - 54	41 - 47	75 – 88	Strong or severe gale Ht 7m High At Sea high waves and dense streaks of foam may begin to affect visibility. On land slight structural damage occurs; chimney pots and slates removed
Force 10	55 - 63	48 - 55	89 - 102	Whole gale or Storm - Ht 9m Very High At Sea very high waves with overhanging crests, lots of spray makes the sea almost white, visibility seriously affected.
Force 11	64 - 72	56 - 63	103 – 117	Violent Storm Ht 11m Very High At Sea exceptionally high waves and a complete coverage of long white foam patches. All crests blown into froth.
12	73+	64 +	118 +	Hurricane Ht 14m plus Phenomenal At sea the air is completely filled with driving spray, visibility extremely difficult. On land devastation occurs.



Respect

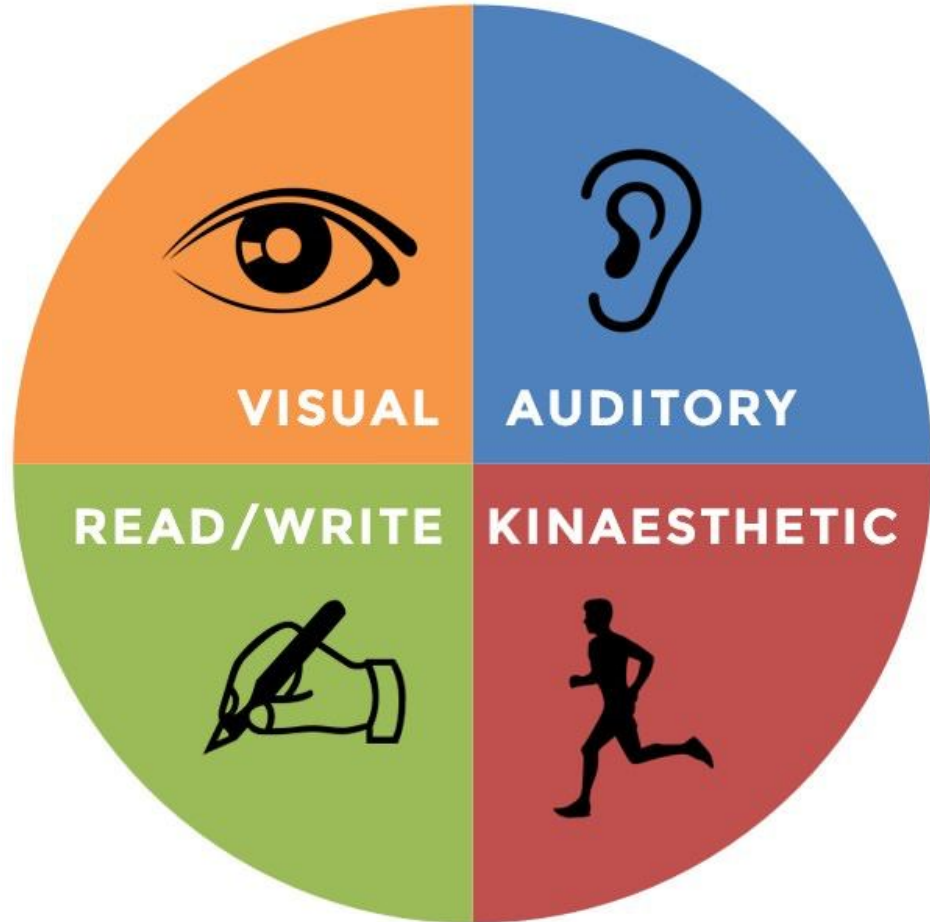
Everyone is a human and wants to be seen as the individual they are. This is fundamental to teaching.



How to Tie a Bowline



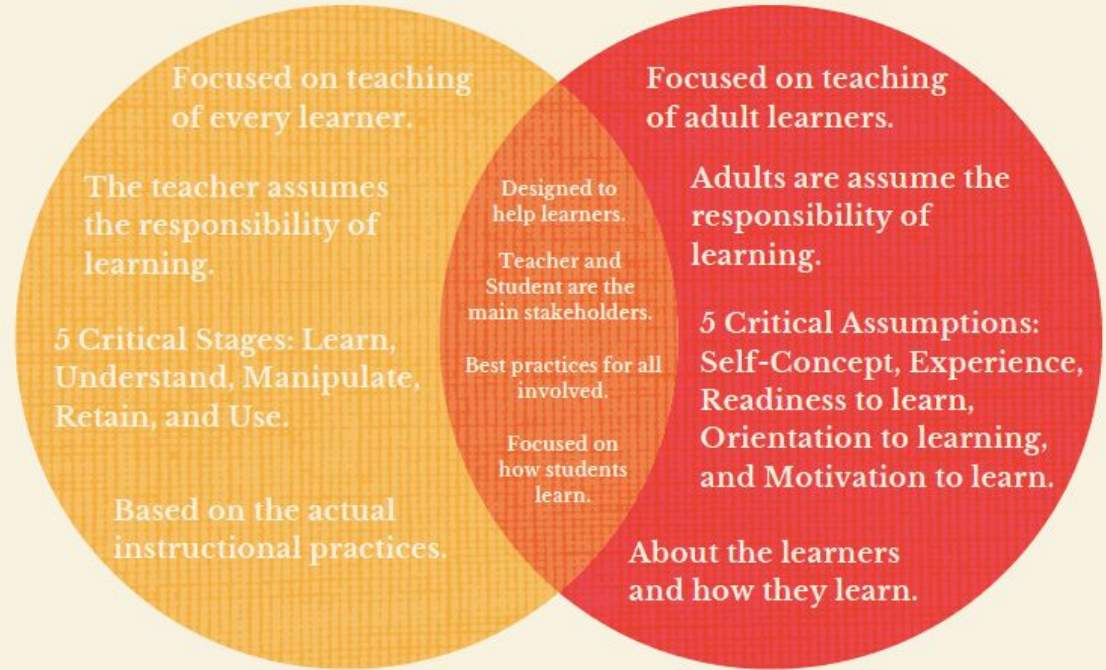
Learning Styles





Learning Styles

Pedagogy vs Andragogy





Actionable Items

- Give Respect
- Set Expectation
- Continue to Engage
- Be Flexible
- Be Intentional



Q & A

Thank you!

